

# RADIANTPANEL BASEBOARD

<b>RadiantPanel Baseboard</b>	<b>2</b>
<b>Technical Data</b>	<b>2</b>
<b>Cover Plates</b>	<b>2</b>
<b>End Caps</b>	<b>3</b>
<b>Inside /Outside Corners</b>	<b>3</b>
<b>Nylon Clip</b>	<b>3</b>
<b>Fittings</b>	<b>4</b>
<b>Accessories</b>	<b>4</b>
<b>Components</b>	<b>4</b>



RPB PL0807

## RadiantPanel Baseboard



### Ordering Information

P/N	Length	List Price
1015W	1 ½'	52.75
1020W	2'	58.10
1025W	2 ½'	65.60
1030W	3'	74.50
1035W	3 ½'	82.00
1040W	4'	90.30
1045W	4 ½'	98.90
1050W	5'	107.60
1055W	5 ½'	115.70
1060W	6'	124.80
1065W	6 ½'	132.85
1070W	7'	141.50
1075W	7 ½'	150.50
1080W	8'	159.30
1085W	8 ½'	167.70

### Application

Hot water RadiantPanel baseboard heating. Comes complete with 3/8" I.D. Compression fittings suitable for PEOC-PLUS or Pex pipe, reflecting foil, and mounting brackets.

The color is RAL 9010 (pure white).

### Technical Data

Material:	Copper lined aluminum
Wall thickness: .	0.10" (2.54 mm)
Fittings:	Brass
Recommended Max. Operating Temp.:	180° F (82° C)
Maximum Operating Pressure:	50 psi
Weight per Foot:	1.34 lb. (.61 kg.)
Height:	5.141" (130.6 mm.)
Depth, front to back:	0.925" (23.5 mm.)
Distance between S & R (ctr. to ctr.):	3.06" (78 mm.)
Water Content per Foot:	0.018 gal. (.068 liters)
Internal tube diameter:	0.425" (10.8 mm.)

## Cover Plates



### Application

RadiantPanel trim pieces used to conceal pipe and fittings.

### Ordering Information

P/N	Description	List Price
2000W	12" Snap On Cover Plate	7.60
2003W	60" Snap On Cover Plate	40.25

## End Caps



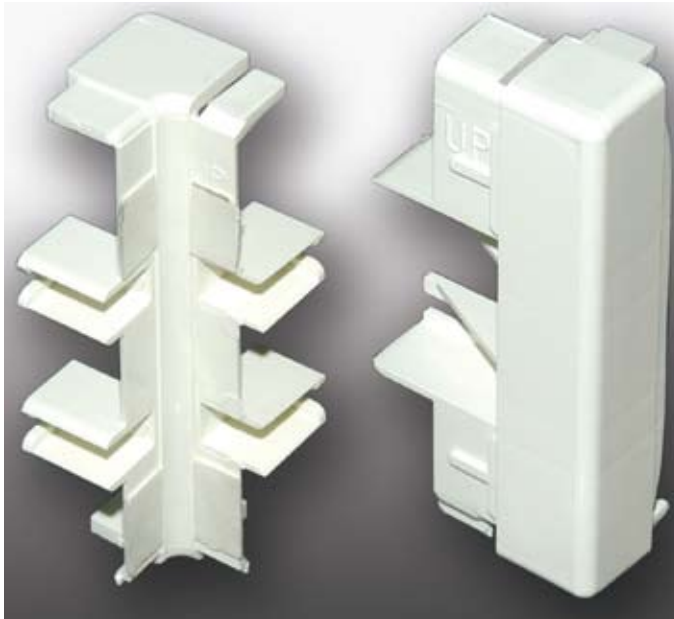
### Application

RadiantPanel trim pieces.

### Ordering Information

P/N	Description	List Price
2012W	Right End Cap	2.95
2013W	Left End Cap	2.95

## Inside and Outside Corners



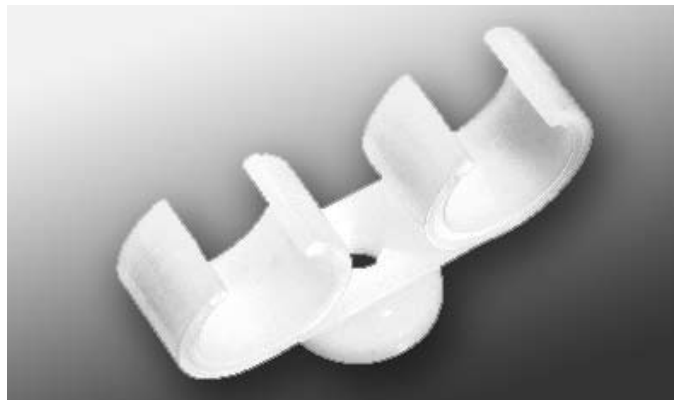
### Application

RadiantPanel trim pieces.

### Ordering Information

P/N	Description	List Price
2010A	Inside corner with 2 x #2014	22.40
2010W	Inside corner	4.30
2011A	Outside corner with 2 x #2014	23.10
2011W	Outside corner	5.25

## Nylon Clip



### Application

To secure RadiantPanel pipe supply and return lines.

### Ordering Information

P/N	Description	List Price
DNC-12	Nylon Clip	0.90

## Fittings

### Ordering Information

P/N	Description	List Price
3040	3/8" PEOC x 1/2" Male Adapter	6.25
3041	3/8" PEOC x 3/4" Sweat Adapter	6.95
3045	3/8" PEOC Coupling	7.50
3046	3/8" x 300' PEOC-PLUS pipe with oxygen barrier	217.35

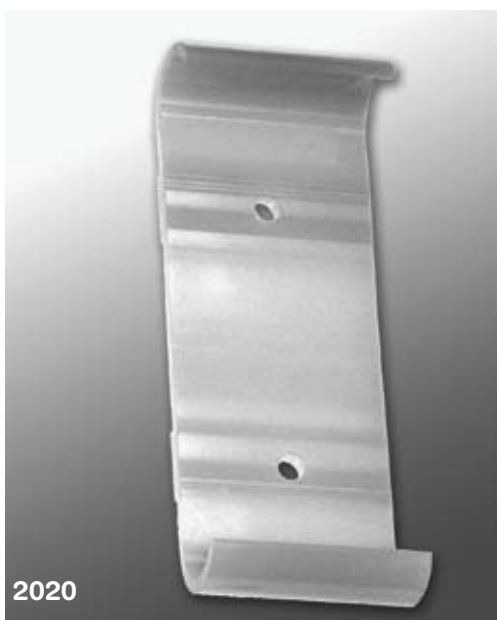
Please see our *Heating Systems Price List* for additional items



## Accessories

### Ordering Information

P/N	Description	List Price
3034	Metal Bend Support for 3/8" pipe	1.70
2020	Panel Bracket (spare)	3.05
2021	Wall Fastener for 12" & 60" cover plate with 2020 Panel Bracket	6.15



### Ordering Information

P/N	Description	List Price
2014	3/8" Copper PEOC tails 90°	9.05
2015	3/8" Copper U bend	12.95



## Components

### Ordering Information

P/N	Description	List Price
9072	White Touch-up Paint (2 fl. Oz.)	\$ 10.25